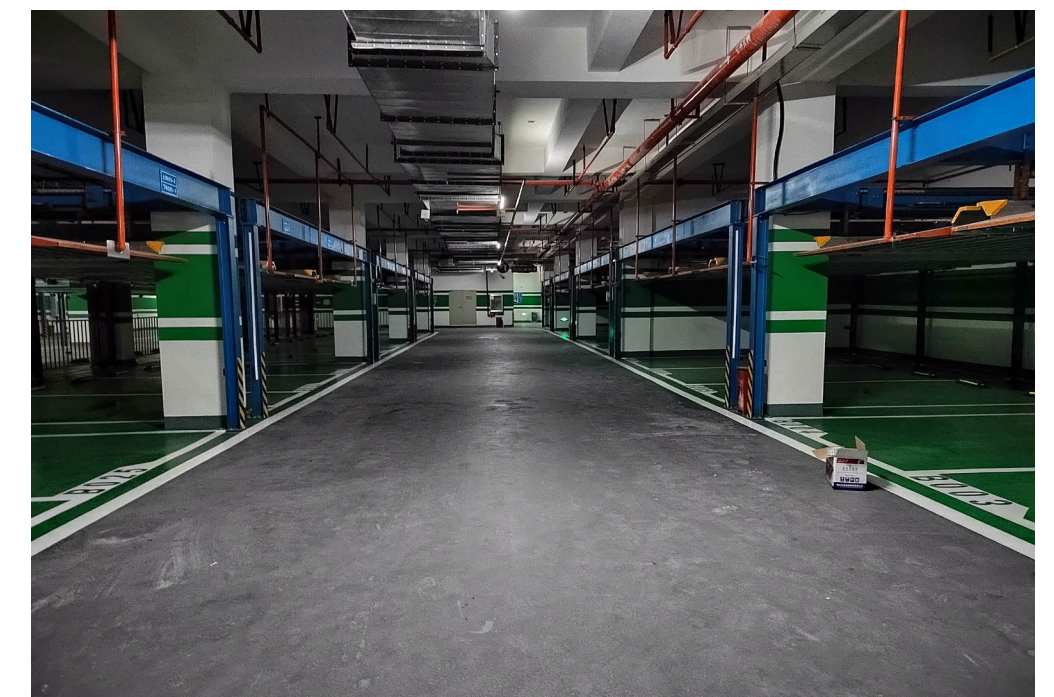


2.1 Semi-Automatic

2.1.1 Simple Lift Parking System (PJS)

Budget: 250,000-270,000 Baht ไม่รวมค่าก่อสร้างรากฐาน (สามารถจอดได้ 2 คันต่อ 1 ชุดติดตั้ง)

Drive Function		Mechanical System
Car Size	L×W	$\leq 4.7\text{m} \times 1.8\text{m} \times 1.55\text{m}$
		$\leq 5.2\text{m} \times 1.9\text{m} \times 1.55\text{m}$
	×H	$\leq 5.3\text{m} \times 2.1\text{m} \times 1.55\text{m}$
		$\leq 6.5\text{m} \times 2.8\text{m} \times 3.0\text{m}$
Car Weight	$\leq 1700\text{kg}$ to $\leq 10000\text{ kg}$	
Motor Power	Lift	5.5/7.2/9.2 kw
Lift Speed		2.5m/min
Operation System		IC card/key board/manual
Power Supply		3N,AC,380V,50Hz



Simple Lift Parking System (PJS)

